

**MOTOR TRANSPORT  
MUSEUM  
CAMPO, CA**

**APPLICATION FOR MEMBERSHIP**

Name: \_\_\_\_\_

Address: \_\_\_\_\_

City, State, Zip: \_\_\_\_\_

Telephone: \_\_\_\_\_

Special Interests: \_\_\_\_\_

Dues are \$20 per year, and member benefits include a subscription to MTM's quarterly newsletter, as well as the quarterly "Transport Pioneer."

Events include an annual springtime Open House and barbecue at the mill, truck runs to local parades, annual swap meet and the occasional and unscheduled hunt for that well preserved historic truck lurking behind the barn.

Mail applications to:

Motor Transport Museum

31949 Highway 94

Campo, CA 91906

[www.motortransportmuseum.com](http://www.motortransportmuseum.com)

**MOTOR TRANSPORT  
MUSEUM  
CAMPO, CA**

The Motor Transport Museum is located in the historic community of Campo, 50 miles east of Downtown San Diego. The museum is housed in the historic Campo Feldspar Mill, built in 1924 to mill feldspar mined in nearby Hauser Canyon. The material was ground here for use in the manufacture of porcelain, glass and pottery for products ranging from sparkplugs to bathroom fixtures.



Other local attractions include the San Diego & Arizona Eastern Railroad, the "Impossible Railroad", now represented by the excursions of the San Diego Railroad Museum, in addition to historic Camp Lockett as preserved at the Gaskill Bros. Stone Store Museum. Visit Campo for a walk through history.

**MOTOR TRANSPORT  
MUSEUM  
CAMPO, CA**



The Motor Transport Museum's objective is to create a positive awareness and appreciation for old trucks and the development of the motor transport industry. The Museum provides a place for research, preservation, restoration and public display of antique and historical trucks and related equipment, as well as photos, literature, memorabilia and other information documenting the trucking industry, truck production and the pioneers who have made a contribution to the prosperity of California and the United States.

**Motor Transport Museum**

31949 Highway 94

Campo, CA 91906

(619) 478-2492

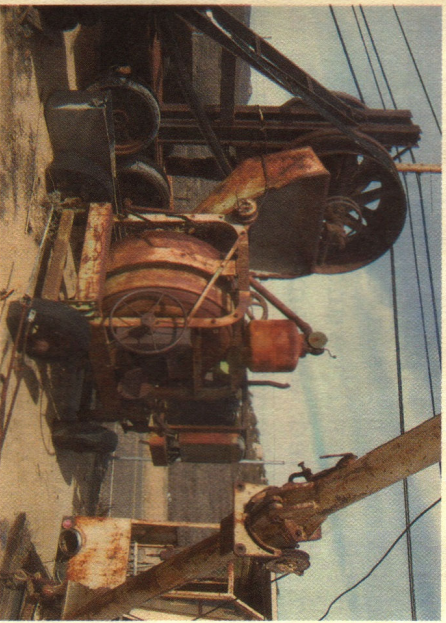
Open Saturdays 10 AM-5 PM

Admission is free

Donations are accepted

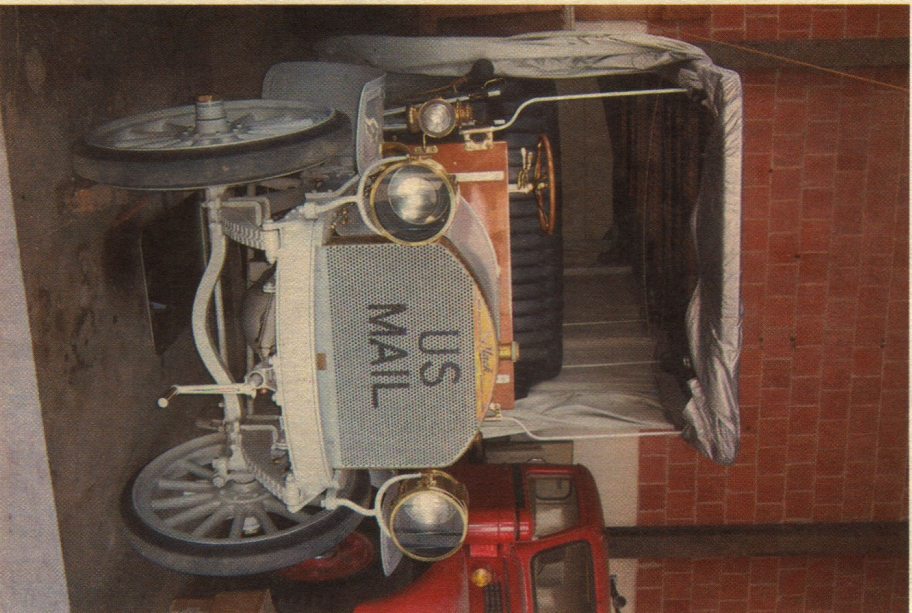
**Mack, Fageol, White, International Harvester, Linn, Reo, Diamond T, FWD, Autocar, Divco, Nash, Garford, Federal, Republic and USA.**

Most all of the major truck manufacturers from 1912 to 1970 are represented at the Motor Transport Museum, as well as several rare and very obscure truck lines that have since faded into transport history. Also represented are nearly every variation of utility body ever mounted on a truck chassis. Cargo trucks, firetrucks, buses, cranes, lumber trucks, fuel trucks, wreckers, quarry trucks, milk trucks, military vehicles, cherry pickers and truck tractors are all in attendance at MTM. Many are functional, some are simply awaiting their turn to be restored to their former glory.



Equipment related to the trucking industry is also well represented by vintage generators, cranes, stationary engines, trailers, compressors and construction equipment such as a chain drive rock truck from the original construction of Boulder Dam.

The collection of the Motor Transport Museum contains several unique and expertly restored commercial vehicles. One fine example is the Julian Stage, a 1912 Mack believed to be the first motorized bus in San Diego, which delivered mail and passengers from the SD & AE railroad station at Foster, to the gold rush town of Julian in the Cuyamaca mountains.



Although Foster and the railroad are now gone, the stage has now been restored by MTM members for future display at the Julian Historical Society Museum.

The Motor Transport Museum has many restoration plans in the works, including the following projects:

- Reconstruction of a 1920's vintage gas station at the Mill, including gas pumps and period automotive equipment
- Restoration of a 1924 Cadillac five door bus, a unique vehicle highly representative of the quality coach builders of that era.
- Restoration of the first motorized school bus that carried students to the original one room schoolhouse in Campo. After a brief search, the old school bus was located and recovered from a ranch in eastern San Diego County and now awaits restoration by MTM staff.
- Location and recovery of one of the original Mack Senior trucks that was used in the construction of the Mt. Wilson Observatory in the San Gabriel Mountains. The truck tumbled off the steep, narrow and curving roadway during a return trip in 1913 and was lost in the canyon below. MTM members hope to locate this piece of history using original photos of the accident site.
- Restoration of a 1919 Master truck, used for many years by local San Diego miner Albert Hoover to haul ore for milling.